

POST OFFICE BOX 100
MATAWAN, NEW JERSEY

U.S. POSTAGE
PAID
Matawan, N.J.
Permit No. 39



Strathmore

OBSERVER

OCCUPANT
19 NOBLE PL
MATAWAN NJ

Vol. 1—No. 8

A PUBLICATION OF THE STRATHMORE CIVIC ASSOCIATION

JUNE, 1964

By-Law Amendments Slated For Action

Two amendments to the By - Laws will be acted upon at the June meeting of the Association. They are:

EXPENDITURES

Article II, Section 2A

"The Executive Committee shall have the authority, by a two-thirds vote of members present, at any legal meeting, to appropriate up to two hundred dollars (\$200.00) for any item which it finds to be of such a nature that it may not be held over until the next general meeting. Any action taken in this manner shall be reported in a special announcement at the following meeting of the Association."

NOMINATING COMMITTEE

That Article 1V, Section II, Sentence three (3) be changed to read as follows:

"The Committee shall present at least two (2) nominees for each office who are not members of the Nominating Committee and the report shall be given at the regular meeting immediately preceding the meeting at which the election is to take place and shall present only the names of members in good standing who have consented to serve if elected."

Vote "YES"

The "yes" vote in the Matawan Regional School District had their day by better than 3 to 1 in the June 2 referendum. The voters approved the \$2,625,000 building program proposed by the Board of Education. The next step will be for architect Henry A. Finne to draw final plans and blueprints. The State Department of Education will then approve the plans and construction bids received. This will take about six months.

A 34-room kindergarten-thru-eighth grade school will be built on Lloyd Road and a 10-room kindergarten-thru-sixth grade school built in the Borough on Ravine Drive for the first phase.

The target date for the completion of the Lloyd Road School is January 1966. The \$2,625,000 bond issue includes funds to purchase additional sites to complete the board's ten year program.

NEXT MEETING!

Wednesday, June 24

STRATHMORE SCHOOL
8:30 p.m.

COMMUNITY PROBLEMS
DISCUSSION
SHORT BUSINESS MEETING

Ass'n. Meeting Important

This month's meeting of the Association is a vital one. (See box on this page for date and place.) The membership will vote on whether to confirm or reverse several issues tentatively approved at the May meeting. They must be voted on again because we did not have a quorum at that meeting.

Two amendments to the laws have been proposed which will be voted upon; both involve substantial changes. The first would give the Executive Committee the power to spend up to \$200 out of the Association treasury for any item which they decide may not wait until the membership can meet. The Executive Committee now has the power to spend up to only \$50 and that must be for a regular operating expense.

The second amendment proposed, effecting the nomination of officers, would compel the nominating committee to select at least two persons for each office, none of whom could be members of the nominating committee.

Because most members are unable to attend long meetings, the program of this month's meeting will be short but vital. At 8:30 p.m. SHARP quorum permitting, the meeting will be called to order. When action has been taken on all regular business, the meeting will be adjourned. The officers and committee chairmen will remain to answer any questions, and for a general discussion of topics of interest. New residents unfamiliar with the work of the Association will find this of particular interest.

In accordance with the By - Laws, the Association will have no regular meetings during July and August, so we ask that you take out one short evening to help make your association function in making your community a better place in which to live.

PARKER, NEW OFFICERS INSTALLED IN MAY

Herbert J. Parker, 43 Ayrmont Lane, was installed President of the Association for the 1964 - 65 year at the May meeting of the General Assembly.

Mr. Parker, former Zoning Committee Chairman, heads the new slate of officers which include: David Sutliff, Vice - President; Mrs. Marilyn Brenner, Secretary; and Robert Beecher, Treasurer.

Mr. Parker, the third President of the Association, succeeds Robert J. Chesterman, who did not seek re-election.

CHAIRMEN CONFIRMED

At the May meeting of the Civic Association, Herbert J. Parker announced the appointment of committee chairmen with the approval of the membership. Named were: Taxation, John Skvarla; Zoning and Planning, Daniel Millman; Education, Frank Gilbert; Recreation, Carmine Caffera; Streets and Safety, Sheldon Pivnik; Property and Utilities, Stephen Levine; Membership, John Driscoll.

Two study committee chairmen were also appointed. They are: Vice - President David Sutliff and Jonathan White, special United Fund Committee; James Snyder, High School Scholarship Study Committee.

Water Pressure Low

During the week - end of May 23 - 24, some 150 homes in Strathmore were totally without water for 2 hours, and water pressure was low in most sections for 2 days. The long dry spell put abnormal demands on the Strathmore Water Company system and equipment. Extremely heavy water use on newly seeded lawns was a contributing factor.

Recently, the Strathmore Water Co. mailed notices that water should not be used for lawn sprinkling between the hours of 12 noon to 5 p.m. on week - ends. An Executive Committee spokesman urged cooperation with the water use regulation until the matter is fully explored.

Commitment To Excellence

There are many lessons to be learned from the June 2nd School Bond Referendum. The least important of these is that energetic newcomers in large numbers can sway the vote. The most important lesson, perhaps the least obvious, is that those who voted "yes" on June 2nd have an obligation now. They have a stake in the future. We are fortunate in having a far-sighted Board of Education endowed with the courage of their convictions.

But the "yes" vote obligates the voter to support the Board and the professional staff in their efforts to make the schools not better, but the best in Monmouth County. It is incumbent on the voter to keep informed of the work of the Board and staff. This does not mean any group or individual should interfere in the academic program of the school district. It does mean, however, that the individual should know what the Regional Board of Education proposes to do with the tax dollar. It does mean, the voter understand the division of responsibility between the Board, the administrators of school expenditures, and the professional staff who make and carry out educational policies.

The School Bond Referendum vote means there is a COMMITMENT TO EXCELLENCE in Matawan and it has its beginning in the Regional School District.

Now About Lawns

In our deeds, a prominent restrictive clause (NO. 11 headed LAWN MOWING) demands that "lawns shall be moved and weeds removed at least once a week between April 15 and November 15 of each year."

We wonder who holds the deed to the shaggy unlandscaped area surrounding the Water Tower that serves as a landmark for many of us. That sea of scraggly weeds is a poor hallmark of a community. To observers' knowledge, it has never once seen the blades of a mower.

STANDING COMMITTEES

For information on any of the activities of the committees contact the following committee chairmen:

Taxation—John Skvarla	7224
Zoning—Dan Millman	8279
Education—Frank Gilbert	5720
Recreation—Carmine Caffera	8283
Streets & Safety—Sheldon Pivnick	8319
Membership—John Driscoll	8770

Charter Being Studied

At the November 1963 election, the voters of Matawan Township set up a five member Charter Study Commission. The Commission is presently studying the township committee form of government, comparing it with other forms available under the statutes, and in general determining whether the government of Matawan Township can be strengthened, made more responsive and accountable to the voters, or more economical and efficient under a different form.

The Commission will make its report public by August and if a change is recommended, the voters will be asked to approve the change in the November general election.

The form of government is only part of the story. It is imperative that all qualified voters exercise their franchise intelligently so that only the most qualified people are elected to public office. There is no substitute for honest, capable, dedicated public officials. However, the officials can be helped considerably in the performance of their duties by serving in a form of government most suited to the abilities of local public servants while being the most responsive to local needs and desires. Ultimately all taxpayers will benefit from good people operating under a good form.

Your Association has a Charter Study Committee whose function is to keep you abreast of the activities of the Township Charter Study Commission. The committee has been attending hearings as well as doing their own research. The Commission has concluded its examination of the Township Committee form and is investigating alternatives under the law. The consensus of testimony taken indicates the present form does not provide for efficient administration. Most witnesses suggested a manager or business administrator who would perform the day to day administrative tasks leaving the Township Committee free to set overall policy. The Township Committee is badly overworked since they are both legislators and administrators. The committee urges the membership to be aware of the meetings and final report of the Township Charter Study Commission.

THE STRATHMORE OBSERVER

Published monthly by the
Strathmore-At-Matawan
Civic Association, Inc.,

Post Office Box 100,
Matawan, New Jersey

Herbert J. Parker, President
David Sutliff, Vice - President
Marilyn D. Brenner, Secretary
Robert Beecher, Treasurer

Editorial Staff

Norman K. Brenner Lois Forman
Julius Puchy S. Roger Dixon
Eleanor Shafer Eileen Weiss
John Piezen

Walter Zaleskie, Business Manager

Letter to Editor

Sir:

I presume that a "Scoffer" is one who "scoffs" and Webster defines "scoff" as to jeer, gibe, flear, sneer, flout, scourn, mock or deride. According to the April issue of the Strathmore Observer a "scoffer" is one who offers a good deal of negative reaction and criticism over the recent activities of the civic association. The article titled "The Scoffers" is in itself a prime example of negative criticism. Critical minorities and sometimes even majorities have often been branded with the choicest of defamatory adjectives. It is surprising how frequently a bit of power is flouted with impunity.

There is little doubt that the citizens of Strathmore endorse the Civic Association concept as witnessed by the present membership. What however does cause controversy, disagreement, and often confusion are the issues that arise and sometimes championed by a few. Even greater disagreement often occurs over the action and its timing, taken to solve an issue. Such a major issue we have had recently and are still saddled with it much to the personal detriment of many of our members. Such issues need the maximum of discussion before a course of action is adopted and my own manipulation of the figures published indicate that a rather small majority of our citizens have fully supported this venture into legal folly. However, the action adopted on very few issues of major significance enjoy a large supporting plurality. As free people we agree and abide by the laws of the majority, but that doesn't make the minority "scoffers." It is the duty of responsible public representatives to promote and cultivate debate and understanding. The very progress of civilization has been distilled from the boiling pot of human controversy, debate, and disagreement, and from the basic right of individuals to say No.

We in Strathmore have amongst us those who dedicate all their spare time to civic affairs and functions, and then we have those who donate just a portion of themselves towards community effort, and last we have those who prefer to dedicate all their spare time to the beautification of their homes and yards and thereby set the standards for all of us to follow. Each of these is necessary to the fulfillment of wholesome community life and these are the types of people we have in Strathmore. None amongst us is a "scoffer."

This is being written with the hope that it will be published in the Strathmore Observer so that in the future those who say "aye" to an issue will not "scoff" at those who have reason for saying "nay."

William Yurko
Deerfield Lane
Matawan, N. J.



**SERVICE
IS OUR BIGGEST
ASSET!
CAN WE HELP
YOU?**

Your neighbors believe we can!

Last year 49,532 of your neighbors said, "That's my bank."
Today 60,051 do! We can fill all your banking needs.

STOP IN AND SEE US - MATAWAN OFFICE
168 Main Street

CHECKING ACCOUNTS	LOANS
SAVING ACCOUNTS	EASY CHARGE
SAFE DEPOSIT VAULTS	BANKING BY MAIL
TRUST DEPARTMENT	



CENTRAL JERSEY BANK AND TRUST COMPANY

ALLENHURST · ALLENTOWN · BRADLEY BEACH · EATONTOWN · FARMINGDALE
FORT MONMOUTH · FREEHOLD (2) · FREEHOLD TOWNSHIP · LONG BRANCH
MARLBORO · MATAWAN · NEPTUNE CITY · SHREWSBURY

Member Federal Deposit
Insurance Corporation

Bayshore Community Hospital Begins Drive Twp. Little League

Opens 1964 Season

As the Bayshore Community Hospital kicks off its fund drive to raise \$750,000 in contributions, **The Observer** believes many people in the community have questions about the proposed Hospital and attempts to answer a representative number of questions. Why another Hospital in Monmouth County with River-view, Fitkin and Monmouth Medical? There is a bed shortage. There is overcrowding in existing hospitals. The distance is great to the existing hospitals. There is tremendous growth taking place in Monmouth County.

The bed shortage is serious. The State of New Jersey recommends 3.5 hospital beds per thousand population as the minimum requirement for general hospital facilities. Based on 1963 population, our area is short 427 beds.

The expansion programs of existing hospitals planned or under way will not meet this need until 1965 or 1966. In 1966, when all expansion programs will have been completed, there will be a shortage of 324 hospital beds. By 1975 there will be a shortage of more than 800 beds.

A bed shortage results in serious overcrowding. It will become even more critical in the years ahead. The national average of hospital occupancy is 75%. In Monmouth County occupancy ranges from 74% to 100%. The average for all hospitals in the county is 82.1%

Distance and population density is another factor. One-third of the population of Monmouth County lives north of the Navesink River and east of Route 79. Most people must travel at least ten miles over heavily traveled and hazardous highways to the nearest hospital.

Has the problem reached its peak? The need for hospital beds will become more and more acute because of the tremendous growth anticipated for Monmouth County. The County Planning Board estimates that between 1960 and 1975 the population will almost double. The County Planning Board has recom-

mended the establishment of two additional hospitals one in the Bayshore area, and one in the Freehold area, with priority for the Bayshore area because of its more rapid growth. The Planning Board also pointed out that it would be a mistake to plan one hospital to serve both of these areas.

The Monmouth County Medical Society has endorsed the Bayshore Community Hospital. The Medical Policy of the new hospital provides for an organized open staff encouraging full and effective use of the new hospital by the doctors of the area. More than 100 doctors have already indicated a desire to affiliate with Bayshore.

What is proposed as a first step is a 100 bed complete general hospital with medical, surgical, obstetrical, pediatric, emergency, out-patient, diagnostic and treatment facilities is planned. It will be a non-profit voluntary hospital run by the people of the area for the people of the area.

It will be built on a fifteen acre site on Beers Street in Holmdel Township near the Garden State Parkway. This location is at the heart of the rapid growth area of Monmouth County.

It is hoped that ground can be broken late in 1964 or early in 1965. This will mean completion early in 1966. Present estimates indicate a total cost of \$2,240,000. These estimated costs are being carefully evaluated by the Building Committee, the architect and a professional hospital consultant.

The Hospital plans to apply for a Federal grant of \$750,000. A minimum of \$750,000 must be raised in contributions. Commercial borrowing will make up the difference.

The fund raising campaign will begin shortly and all avenues of contribution will be contacted.

Arthur Goodwin, 94 Andover Lane, headed the Civic Association Hospital Study Committee.

GREAT BOOKS GROUP IN MATAWAN

The Great Books Discussion Group of Matawan, completing its fifth year of reading and discussing selections from the Great Books, plans to return to the first year readings. The group meets on the first and third Thursdays in the Middlesex Road Recreation Building in Matawan Borough.

Readings are taken in order from lists selected by the Great Books Foundation, Chicago, which publishes the selections in paperback form.

The local group has decided to return to the first year's readings so that more interested people may take advantage of the Great Books program.

Anyone interested in joining the Great Books Discussion Group may do so by contacting Mrs. George W. Connor, Eisenhower Court, Matawan.

PARKWAY STUDIES THEATRE

The New Jersey Highway Authority which operates the Garden State Parkway is expected to release the results of a "feasibility study" for an open air theater in Holmdel Township in a few weeks.

Gov. Richard J. Hughes said the theater, on Authority property should be feasible and would be a big boost for cultural activity. The Highway Authority acquired 328 acres of land in Holmdel Township for its headquarters more than 10 years ago but located in Woodbridge.

The area known as Telegraph Hill Park, provides motorists on the Garden State Parkway with a scenic overlook, picnic tables and fireplaces.

On Saturday, April 11th, Matawan Township Little League held tryouts for 207 boys who had registered. As a result of these tryouts, a draft of players was held by the managers on April 16th and 17th of which 120 boys were selected for the eight Major League teams and 87 boys for the five Minor League teams.

Each Major League team will have 15 players as well as a Manager and Coach. Listed below are the names of the teams and their respective Manager and Coach:

Bombers — Mgr., Kenn Rupp; Coach, Mel Schram; **Cardinals** — Mgr., Bob Bonstein; Coach, Len Levine; **Tigers** — Mgr. Richard Katz; Coach, Frank Heinz; **T-Birds** — Mgr., Bill Ottoway; Coach, Ron Marly; **Mets** — Mgr., John Rossi; Coach, Walt Mc Nulty; **Jets** — Mgr., Earl Dennis; Coach, Thurman Lamberth; **Eagles** — Mgr. Manwell Silva; Coach, Bill Jordan; **Vets** — Mgr. Earl Rutan; Coach, John Karg.

Among the organizations that are financially sponsoring a Major League team are:

Farmers and Merchants Bank, Matawan
Bob's Atlantic Service Station, Rt. 34
and Lloyd Road

Bill's Store, South of Lloyd Rd., on Rt. 34
V.F.W. Guadalcanal Post #4745, Cliffwood

Women's Auxiliary, Cliffwood

Mr. Kenneth Rupp, formerly President of Matawan Township Little League, has relinquished this position in order to manage the Bombers. At a recent Board Meeting, Mr. Pete Picariello, Vice President was elected President and Mr. Leonard Levine was elected Vice President. All other officers and Directors remain the same.

DEFEAT GAS STATION IN STRATHMORE

Long-time area residents and their Strathmore neighbors joined voices in opposing a variance to build a Gas Station at the southeast corner of Lloyd Road and Church St. The public hearing held by the Township Zoning Board of Adjustment on April 29th was the scene of the first battle to keep the residential character of the Strathmore area intact. The second was held on May 27th.

Mr. John Saccone, a native of the area, and Mr. Joseph Greco, a Strathmore resident, both of whom are lawyers and nearby resident, joined forces in arguing against the gas station variance. They worked together in cross examining the witnesses for the gas station and in direct questioning of the many local residents who testified against it. Robert J. Chesterman, of the Strathmore Civic Association, presented the Association's opposition.

Testimony at the public hearing disclosed that there are 7 gas stations within a one mile radius of the site.

Happy Time Day Camp

FREEHOLD, NEW JERSEY

BOYS AND GIRLS — AGES 3½ - 14

11th Season June 29th — August 28th

Hour 9 a.m. - 5 p.m. Monday thru Friday

DAILY SWIMMING LESSONS

In Large Filtered Pool

ARTS and GRAFTS PROGRAM

ARCHERY • OVERNIGHT CAMPING

HIKES • CAMP TRIPS, Etc.

(Transportation Provided)

WEEKLY REGISTRATION REASONABLE RATES
OPEN FOR INSPECTION EVERY WEEKEND

CHARLES A. NELSON, DIRECTOR
Member of Freehold Regional High School Faculty

Phones: 462 - 2733 — 462 - 2085

New League of Voters Organized in Matawan

Mrs. Alan Pearl was elected president of the newly organized League of Women Voters at a recent meeting in the cafeteria of the Regional High School. Mrs. James M. Baker was elected first vice-president; Mrs. Robert Wheat, second vice-president; Mrs. Donald Burry, secretary; and Mrs. Robert Berk, treasurer. The board of directors will include Mrs. Charles Springhorn, Mrs. Charles Mallock, Mrs. Seymour Pitlich and Mrs. Michael Alterman.

The guest speakers were Miss Mary Louise Nuelsen, president of the New Jersey League of Women Voters; Mrs. David Ackerman, first vice-president, and Mrs. George Walker, state board member and adviser to the newly formed local league. Membership in the league, which is non-partisan, is open to all women citizens of voting age; Anyone interested in joining may contact the membership chairman, Mrs. Robert Wheat, 21 Essie Drive.

The League of Women Voters was formed in 1920 after the 19th Amendment was passed. There are now 135,000 members in the 50 states who participate in all phases of government.

After the League of Women Voters studies a topic, it presents material that represents the most exhaustive information on the subject.

League studies and surveys are used by legislators, educators, and students.



every shade.

tone and tint imaginable!

With Martin Senour's new color system of paints — there isn't a color we can't give you. Every shade, tone and tint of every color is now possible . . . expertly mixed in minutes.

**MARTIN
SENOUR
PAINTS**

GALE'S KEYPORT
HARDWARE
COMPANY

26 W. Front St. 264 - 2000

OAK SHADES FIRE CO.

F A I R

July 13th to 18th

STRATHMORE
SHOPPING CENTER
ROUTE 34, MATAWAN

BE SURE TO MAKE
THIS A FAMILY AFFAIR
BRING THE KIDS

WATCH FOR THE
BIG RAFFLE!

Carnival Planned

St. Benedict's Church, Hazlet, will hold its annual carnival, June 29th to July 4th at the Fields Plaza on Route 35 and Hazlet Avenue.

Proceeds from the fund raising activity will go toward the parish building fund.

STRATHMORE TAXES

Because our property taxes are included as part of the monthly mortgage payments a great many Strathmore residents have little idea exactly how the taxes are determined and when they are paid. Following is a summary of information on taxes which should be of general interest. For specific information concerning your own tax you should call the Tax Collector, Mrs. Pauline K. Behr at 566 - 1859, or where the question deals with the assessed valuation of your property, Mr. John B. Kenner at 566 - 2531. In either case information will be obtained more quickly if you specify your Section, Block and Lot Number which are shown on your deed.

Tax Rate: The tax rate per \$100 of assessed valuation for 1963 and 1964 are as follows:

	1963	1964
County	\$0.43	\$0.49
School	1.99	1.76
Municipal	0.67	0.53
Veterans & Senior Citizens ..	0.09	0.09
	-----	-----
	\$3.09	*2.88
Fire District Tax	0.10	0.09
	-----	-----
	\$3.19	\$2.97

* Fractional cents add one cent to total.

You will notice that 1964 rate is .07 higher than the rate published in the *Matawan Journal* on March 5, 1964. The reason for this change is the increase in the county tax rate which was not projected at that time.

Assessed Valuation — The assessed valuations of the Strathmore homes are as follows:

Cape Cod	\$13,500
Ranch	14,000
3-Bedroom Colonial	15,800
4-Bedroom Colonial	16,300
Country Clubber	19,900
Two Car Garage	500
Fireplace 3-Bedroom Colonial ...	600
Fireplace 4-Bedroom Colonial ...	700

Property valuations range from about \$1700 to \$3400. Your exact valuation can be obtained from Mr. John B. Kenner, 566 - 2531.

Veteran's Allowance — (Veterans or Widow of Veteran) — A Veteran's Allowance of \$50 is available to qualified veterans or their widows. The primary qualifications are that you must have held legal title to the home and have been a resident of the state before

October 1st of the previous year, and must possess an honorable discharge. The forms required for this claim can be obtained from the offices of the Tax Collector of Tax Assessor in the Municipal Building on Lower Main Street. For credit you will have to submit photostatic copies of your Honorable Discharge and Separation papers.

Tax Payments — The tax year corresponds to the calendar year, but the new tax rate will not be reflected on tax bills until the second half of the year. The bank is required to pay the total tax assessment in four equal installments in February, May, August and November. However, the official tax rate for a year is not approved by the county until May 1. Therefore, the tax payments for the first half of each year are based on the rate prevailing during the previous year. The total tax bill sent to the bank in July of each year will reflect any overpayment or underpayment made during the first half based on the estimated tax. Normally a change in the tax rate will be reflected each year in the monthly mortgage payments. Because the Dime Savings Bank reviews its New Jersey accounts in June and the new tax bill will not have been submitted until July, it does not appear that the tax reduction will be reflected in 1964 mortgage payments. However, the tax committee intends to make a further check on this point.

First Year Tax Bills — A number of false ideas on tax bills have developed because of the first year's billing. During construction of the homes, Levitt paid taxes only on the land, and this amount was all that was on the Tax Assessor's books. If a home was completed in mid-year, the value would not be added to the assessment until October of that year. The tax bill sent to the bank in July would then include an added amount based on the number of months during the previous year after the home was completed. Thus it would be possible, if a home were completed shortly after October 1, to pay only property taxes for almost a full year and then to pay for the previous year's taxes on the home during the following year. Because of these complications, questions concerning your tax bill should be referred directly to the Tax Collector.

REGIONAL HIGH ACCREDITATION RENEWED

The Regional Junior-Senior High School accreditation will be renewed by the State Department of Education when the present five year accreditation expires this year.

Since the last accreditation was granted, the district was converted from a consolidated to regional system, and a new \$2,470,000 58-room high school built. The district also converted from a regular four year high school to a junior-senior, 7 thru 12, plan.

The Regional School District is among the top five in total enrollment in Monmouth County could, in the future, be the county's largest.

A team of education officials from the county and state departments of education did the evaluation last month. The county school superintendent, Earl B. Garrison, headed the county team and Dr. Max Bogart, the state team. John V. Caracciolo, regional high school principal, said that the accreditation would be for the full five year term, the longest the state grants. The inspection team commended the school for its high teacher and pupil moral, and also had words of praise for the curricula.

During the past year, the administration has added college prep courses and in addition has established, on a small scale, the beginning of a vocational program, with county vocational aid. There are now two sections of machine shop and a electronics lab as well as a course in basic electricity.

The formal written report on accreditation will be released later this year.

LIBRARY RECALLS OLD DAYS

The Matawan Free Public Library was built as a residence by Garret P. Conover in 1830. After building Cherry Hall in 1836, he deeded the property to Mr. G. S. Smock. It later was purchased by Aaron Longstreet. In 19921, his son sold the property for use as a library with the Borough Council donating the money on condition it be used for library purposes only. The little cottage seems very special on Main Street. It fits so well among the older homes. The original Dutch doors and hardware are of special interest. Its deep well provided neighbors with their water supply. Between 5 and 6 p.m., people used to come with their pitchers to be filled for the evening meal.

The Library staff is preparing to furnish the main room as a typical Matawan parlor in the 1800's. Many household items of the era will be on display. Maps, atlases, and photos of early Matawan will be shown. Books from the library of Philip Freneau, Matawan's poet and patriot of the Revolutionary War.

FEIGENSON SHOES

CHILDREN: Buster Brown, Fleet Air (orthopedic)

We carry Thomas Heel and Straight Last Shoes.

WOMEN: Cotillion, Heel Hugger, Clinic (in white)

MEN: Roblee, Pedwin

HUSH PUPPIES and "P. F." canvas footwear for entire family

Open Friday nites till 9 p.m.

43 W. Front St.

Phone 264 - 0147

Keyport

PATRONIZE OUR

ADVERTISERS

*As Good As The Best
And Better Than The Rest!*

THE MATAWAN WINE and LIQUOR STORE

Presents — For Your Convenience

**LARGER — NEWLY DECORATED QUARTERS
With A Terrific Selection Of**

**WINES
LIQUORS**

**COLD BEER
CHAMPAGNES**

**ALSO ICE — ICE — ICE
24 HOURS A DAY — 7 DAYS A WEEK**

Call 566-2341

FOR FREE, FAST DELIVERY

120 Main Street

Store Hours: 9 a.m. to 10 p.m.

NOW

Banking Hours
Will Be Extended

Drive - Up - Windows
At Strathmore Office

Open From:

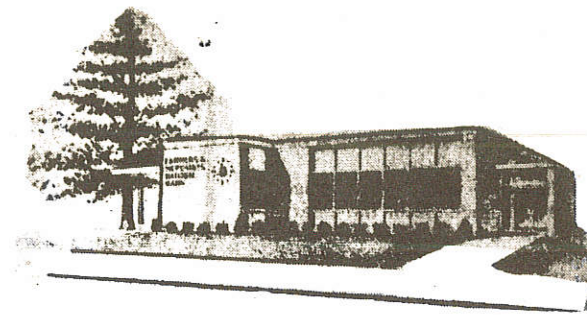
3 - 5 Mondays thru Thursdays

3 - 8 Fridays

INSIDE BANKING

9 a.m. - 2:30 p.m.

6:30 - 8:00 p.m. Friday nights



THE FARMERS & MERCHANTS

NATIONAL BANK

— ESTABLISHED 1830

ROUTE 34 &
LLOYD ROAD

TWO OFFICES
IN THE HEART OF
MATAWAN

MAIN STREET &
RAVINE DRIVE

Attention Strathmore

Vogue 4 HOUR DRY CLEANERS

Every Day - Including SAT.

Coin-Op

Dry Cleaning

4 lbs. 99¢
for only
25c each additional pound

BOX STORAGE

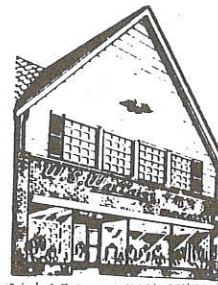
IN OUR

COLD STORAGE
VAULTS

FURS STORED,
GLAZED & CLEANED

HAZLET SHOPPING CENTER
CORNER BETHANY RD. & HAZLET AVE.

Pick Up Phone: 264 - 9757 Delivery
5 MINUTE DRIVE FROM STRATHMORE SCHOOL



*A
New
and
Stimulating
presentation
of*

Men's Clothing

*and
Country Clothes
for her*

*by
W. S. Wallace
Keyport*

STRATHMORE BOYS WIN SCIENCE - MATH FAIR

Barry Steele and James Yurko, sophomores at Matawan Regional High School were the grand over-all prize winners in the Science - Math Fair held at the High School on April 24th. Their exhibit, "Experimental Boiling Water Nuclear Reactor," was considered by the judges to be the most outstanding. Judges based their decision on originality, thoroughness, and mathematical and scientific knowledge.

Township Clean-Up Campaign

As part of the Township's Clean - Up Campaign, Sheldon Pivnik, Chairman of the Streets and Safety Committee asks Association members to refrain from sweeping straw, stones and lawn and garden debris into the streets.

This debris should be placed in cans or cartons to be carted off on regular collection days. Burning this debris, as well as being an unsafe practice, may damage curb stones and black topping. Remember, your efforts to keep the streets clean and roadways sound will make for a nicer place to live and will ultimately help taxes to hold the line.

PATRONIZE OUR
ADVERTISERS

EDITORIAL:

Congratulations Extended!

THE OBSERVER wishes* to publicly congratulate all the voters who resoundingly voted YES for Matawan's School Building referendum. Our community's overwhelming response put the building program into effect by a hearty 3 - 1 margin.

It's easy for voters to sit at home on their apathies. In this case, Strathmore's turnout of well over half of all registered voters for a school matter with no personality contests was a tribute to public information intelligently dispensed, digested, and directed into action.

Bank Plans Exhibit

The Central Jersey Bank and Trust Co., at 168 Main Street will transform its offices into an historical exhibit. As part of the Tercentenary, the bank will feature Matawan's history with maps, photos, pottery and Indian artifacts. There will be an art exhibition by students of the Regional High School.

A bank spokesman said they were trying to make Matawan residents more aware of the rich history of the area dating from the Revolutionary War.

Transportation Set By Hillel Academy

Hillel Academy of Perth Amboy, the Hebrew day school of the Raritan Bay Area, will offer transportation for students enrolling from the Strathmore area, it has been announced by Rabbi David Twersky.

Rabbi Twersky, Dean of the school, said the administration decided to institute an extension of its bus route into the development and its surrounding vicinity after numerous requests made by area parents who wished to enroll their children but had no means of transportation to and from the school. A nominal fee will be charged.

A fully accredited school with grades running from nursery through eighth grade, Hillel Academy is located at 100 First Street. In addition to its well-rounded program of instruction the school features French and art instruction for its nursery, kindergarten and grade classes.

A limited number of enrollments are still available in the nursery and kindergarten sessions for the fall term beginning September 9th.

Nursery classes are held for three and four-year-olds. In order to be eligible for kindergarten, a pupil must be five years old on or before December 31, 1964.

Persons wishing further information may make an appointment at the Academy by calling VAlley 6 - 9266.



WAGON WHEEL PLAYHOUSE

Chestnut Street - Middletown

OUTDOOR SUMMER STOCK

SEASON STARTS JULY 1

SCHEDULE

- July 1 - 18 "A VERY GOOD LAND," Historical Drama by Bill Corio
- July 22 - August 1 "THE ENCHANTED," Comedy
- August 4 - 22 "L'LIL ABNER," Musical Comedy

TICKET INFORMATION AND RESERVATION: 741 - 6073

Free Pickup and Delivery

HOURS 9 A.M. - 10 P.M. Daily & Sunday

HAZLET PHARMACY Inc.

80-B Bethany Road, Hazlet, N.J. 264-3310

- DRUGS - COSMETICS - HALLMARK CARDS
- BABY NEEDS - SURGICAL APPLIANCES
- CUSTOM FITTINGS

Post Office Station No. 2

ANTHONY F. JACKAPINO, R.P.

BILL'S LIQUORS

Highway 34, S. of Lloyd Rd.

STOP IN AND VISIT

Closest To All Strathmore

COLD BEER AT ALL TIMES

OPEN 10 a.m. to 10 p.m.

FREE FAST DELIVERY

PHONE 566 - 7656

STRATHMORE-AT-MATAWAN CIVIC ASSOCIATION, INC.
Statement of Income, Expense and Changes in General Fund Balance
June 18, 1963 to April 30, 1964

Income:

Membership dues		\$1,586.00
Net gain from Halloween dance		248.66
Interest on savings account		<u>22.36</u>
		1,857.02

Expense:

Permanent committees	\$751.24	
Temporary committees	171.68	
General and administrative	<u>315.14</u>	<u>1,238.06</u>

Net increase in fund 618.96

Fund balance at beginning of period	<u>816.80</u>
Fund balance at end of period	<u>\$1,435.76</u>

Statement of Changes in Fund Balances
June 18, 1963 to April 30, 1964

Legal Fund

Proceeds from solicitation		3,835.00
Deduct:		
Legal services	3,250.00	
Printing and supplies	<u>94.43</u>	<u>3,344.43</u>
Fund balance at end of period		<u>\$ 490.57</u>

Observer Fund

Advertising revenue		1,200.92
Deduct:		
Printing	895.00	
Distribution	257.34	
Provision for doubtful account	<u>25.00</u>	<u>1,177.34</u>
Fund balance at end of period		<u>\$ 23.58</u>

REPORT OF CERTIFIED PUBLIC ACCOUNTANT

The Executive Committee
Strathmore-at-Matawan Civic Association, Inc.

I have examined the balance sheet of Strathmore-at-Matawan Civic Association, Inc. as of April 30, 1964, and the related statements of income, expense and changes in general fund balance and changes in legal and Observer fund balances for the period June 18, 1963 to April 30, 1964. My examination was made in accordance with generally accepted auditing standards, and accordingly included such tests of the accounting records and such other auditing procedures as I considered necessary in the circumstances.

In my opinion, the accompanying balance sheet and statements of income, expense and changes in general fund balance and changes in legal and Observer fund balances present fairly the financial position of Strathmore-at-Matawan Civic Association, Inc. at April 30, 1964 and the results of its operations for the period June 18, 1963 to April 30, 1964, in accordance with generally accepted accounting principles applied on a basis consistent with that of the preceding period.


Certified Public Accountant

May 22, 1964

STRATHMORE-AT-MATAWAN CIVIC ASSOCIATION, INC.
Balance Sheet
April 30, 1964

ASSETSLIABILITIESGeneral Fund

Cash in checking account	\$ 461.40	Accounts payable	\$ 48.00
Cash in savings account	<u>1,022.36</u>	Fund balance	<u>1,435.76</u>
	<u>\$1,483.76</u>		<u>\$1,483.76</u>

Legal Fund

Cash in checking account	\$ 240.57	Legal fees payable	\$1,750.00
Cash in savings account	<u>2,000.00</u>	Fund balance	<u>490.57</u>
	<u>\$2,240.57</u>		<u>\$2,240.57</u>

Observer Fund

Accounts receivable-advertising	\$ 196.63	Deferred advertising income	\$ 148.05
Less allowance for doubtful account	<u>(25.00)</u>	Fund balance	<u>23.58</u>
	<u>\$ 171.63</u>		<u>\$ 171.63</u>

Grant Printers

COMMERCIAL PRINTING

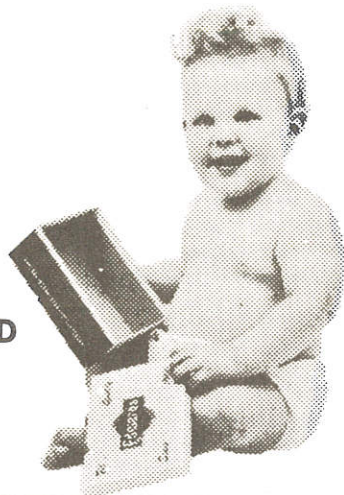
PHONE: 741 - 9028

Edwards Coddlin' Good

THE SHOE FOR CHILDREN

Jodlins

Because Edwards knows how to make quality shoes that pamper, yet give firm support to tiny, delicate feet.



JUNIOR SHOE WORLD
116½ MAIN STREET
MATAWAN, N. J.
Phone: 566 - 8199

Protect your Beautiful Trees from



with the

ROSS ROOT FEEDER

Protects shrubs and roses, too!

SWARTZEL'S
FARM and GARDEN SUPPLIES

— PAINT and HARDWARE —

645 Holmdel Rd. Hazlet, N. J.
Phone: 264 - 2211



ROSS
ROOT
FEEDER
ONLY
\$6⁹⁸
Including box
of Ross Plant Food
Cartridges.

Everything For The Office

BAYSHORE STATIONERS

Party Goods • Greeting Cards

264-5555 Open MON. & FRI. till 9 P.M.
36 W. FRONT ST., KEYPORT, N.J.

LAWN MOWERS REPAIRED

DAY OR NIGHT 264 - 0068

ABC ELECTRIC CO.

REPAIRS - ALL MAKES
SEWING MACHINES, VACUUMS, IRONS
TOASTERS, MIXERS, HAIR DRYERS, ETC.
LAWN EQUIPMENT

109 BETHANY ROAD
HAZLET, N. J.

RAYMOND D. FRYE

RON'S



STATION

HWY. 35 KEYPORT (JUST NORTH OF ROLLO'S)
HWY. 36 AND LAUREL AVENUE, KEANSBURG

Foreign Car tune-ups and repairs
using
Electronic Engine Analyzing Equipment
— 24 Hour Towing Service —

FEATURING KELLY SPRINGFIELD TIRES
AND TUBES AT DISCOUNT PRICES!

Complete U-Haul Trailers, Boat - Trailers
And Truck Rentals Anywhere!
Front End Alignment
Electrical Repair And Overall

PHONE:
KEYPORT: 264 - 9865 KEANSBURG: 787 - 9610

All Minor And Major Engine Repairs



Pick Up And Delivery

Service Car Available

SURF SCENERY SUN

To those of us who left the dim, dark, dingy, dungeon of the "city" — to those of who traded a claustrophobic warren in a red brick cliff for the sunny, wide open spaces — and for those of us just not familiar with the scenic beauty of Central Jersey (as long as you stay away from a good part of the shore) this article is respectfully dedicated.

Spring planting is done, farmers, and only the weeding, watering and worrying remain, but a sensible alternative to the above would be to get away from the house — even if only for an hour or two, and do some exploring of the immediate area.

If it's lush, pastoral scenery you want, stay south of Route 35 and stick to the back roads. You don't need a map — in fact it's more fun without one. All the the back roads that don't dead-end eventually feed into some well-known artery. For example a scenic route (complete with horses, cows and sheep) begins at Line and Van Brackle Road, heading south. Line feeds into Holmdel Road, which eventually crosses Route 79 and then feeds into Route 34. There are many routes far more beautiful just waiting to be discovered and all it costs is the price of the gasoline. Monmouth County is growing fast, so let's enjoy our bucolic surroundings while we can.

When the weather gets warm enough for swimming, and if you have successfully resisted the impulse to join a beach club are now beginning to regret it, kick not thyself, for within five minutes' drive north on Route 34 or the Parkway (exit 120) is a compact but completely charming State Park called Cheesequake. For 25¢ a head plus 25¢ for the car, all the facilities of the park can be yours for the day. There are scenic drives and picnic areas, but the most interesting part is the lake area. Here one end of this beautiful lake has been roped off for swimming, and a pretty white sand beach embraces the sparkling water. Lifeguards are on duty and a modern bath house for showers and clothes-changing, rest rooms and refreshment stands are at the edge of the sand.

Bathing suits, chairs and umbrellas can be rented.

The rest of the lake is devoted to fishing and picnicking. Iron grills for charcoal are scattered around the lake and are connected by natural trails. Each little area is almost a woodland retreat in itself. If you don't like fresh-caught fish, you can always bring along steaks or burgers. One request — please be careful with fires — you know by now how hard it is to grow a tree and how long it takes. Please also leave the area clean — empty beer cans somehow spoil the scenery.

For those who prefer unobstructed sunshine, the tang of salt spray and the hot sandy beach, New Jersey is almost a beachcomber's paradise. The new Sandy Hook State Park is the closest and offers conveniences such as rest rooms, bath houses and refreshment. But if you prefer less crowded conditions, there are miles and miles of beautiful beaches and shore areas between Asbury Park and Atlantic City. Again, try some exploring on your own.

We could go on and on, but space runs out. A good road map of the state, such as the Esso or Shell (these are the two we are familiar with) will not only show you how to get there, but will provide a list of the State Parks and the various facilities available in each. Some maps will also show historical points of interest and in general provide a simple sightseeing guide. For more complete guides to New Jersey events, facilities, recreation, sports, fishing, etc., booklets have been published by the New Jersey Department of Conservation and Economic Development. A postcard sent to the above, at P. O. Box 1889, Trenton, New Jersey 08625, should ask for the following: 1964 Guide to Salt Water Fishing; New Jersey Events Schedule, 1964; Pleasure at Every Turn; and other material of like nature.

Arm yourself with the maps and booklets and with the will to explore. You needn't go very far to discover how interesting and beautiful the Garden State really is. Happy exploring!

• Local Log •

By LOIS FORMAN

Symbol reproduced on this page is the official design marking New Jersey's 300th anniversary. Since 1664 when Berkeley and Carteret were granted the lands between the Hudson and Delaware Rivers, this state has prospered through three centuries.

MATAWAN'S OWN CELEBRATION will climax the last week in August. All that week downtown stores will be gaily decorated, sales will be featured, and merchants will be dressed in period costumes. A parade on Saturday afternoon and a block dance that evening will be highlights. And on Sunday, August 30th, Lake Lefferts will be the scene of canoe races, jousting matches, and a water-skiing exhibition. Everybody's welcome.

SAVE SUNDAY June 28 for a visit to Freehold, our county seat, where an historically important parade will mark the date the Battle of Monmouth was fought. Uniformed cadets in Colonial dress and fife- and -drum -corpsmen in Revolutionary costume will march through town, starting at 1 p.m. Parade terminates at the Raceway where an authentic reenactment of the Battle of Monmouth will be staged. Souvenir maps of the two-stage Battle will be provided for spectators at what promises to be an exciting afternoon . . .

Take advantage of public exhibitions now and through the summer, including Red Bank's Festival of Art in Marine Park; the Long Branch Art Festival July 3-10 at the Historical Museum, Ocean Ave; the exhibit of historical relics and drawings currently on view at the Matawan Branch of Central Jersey Bank.

Over in Princeton Erica Morini and Byron Janis are included among prominent concert artists appearing from June 19th on. Address the New Jersey Tercentenary Westminster Choir College, Princeton, N. J. for schedule.

IF YOU'RE CASTING about for something different to do of a weekend, how about a family jaunt to Washington Crossing and neighboring New Hope, Pa. We recently stopped over at the charming, unpretentious Bucks County Motel (the Inn was jammed). We found the BCM a convenient place to stay, with or without children: it offers swimming and tennis as well as rustic quiet amidst the many temptations of the area. The region has antique shops by the armful, barge boats drawn by mules, and some fine restaurants.

If you don't wish to stay over, Washington State Park is very worthwhile or a day's family outing. McKonkey Ferry House in the Park was Washington's temporary headquarters after his army crossed the Delaware on Christmas Eve, 1776. For the children there are many scheduled events of interest held in Washington Crossing State Park, including a weekly bird-banding. In addition to the lovely natural surroundings of the place that are alone worth your visit, special events are scheduled in the environs to honor the Tercentenary.

HOSPITAL AUX. TO MEET

An open membership meeting of the Matawan Township Auxiliary, Bayshore Community Hospital has been set for July 7 at the Strathmore School. The unit will meet in the all-purpose room at 8:30 p.m. At that time tickets will be on sale for the membership function to be held in August, announced Mrs. Frank J. Nebus, acting publicity chairman.

Other temporary officers, serving until September when officers are to be elected for the year, are: Mrs. Seymour Edwards, co-chairman; Mrs. Barnabas P. Shore, acting chairman; Mrs. James D. Carter, secretary; Mrs. John White, treasurer; Mrs. Myndert Bonnema and Mrs. Lawrence Carrus, co-chairmen for membership.

PATRONIZE OUR
ADVERTISERS

MATAWAN HOME REFLECTS AREA HISTORY

Cherry Hall at 211 Main Street, was built and named by Garret P. Conover in 1836. It is an excellent example of Georgian architecture. The home was constructed during a yellow fever epidemic in New York. Many laborers fled the city and arrived in this area looking for work. There were ample clay deposits on the property so the workers made the bricks in kilns on the property. Mr. Conover purchased the land in 1832, and after the house was finished, he moved into it in 1837. The original tract was 12 acres, part of which had cherry trees, explaining the name given to the home.

Both Church and Broad Streets were cut thru the land which extended to the railroad tracks and included the present school grounds.

Only two families have occupied the house, the Conovers from 1837 to 1926, and the Hutchinson family from 1928 to the present. Warren B. Hutchinson is the present owner.

The house has a fireplace in each room. Two of the mantles are made of hand-carved Italian marble. These are located in the living rooms, one for ladies and one for gentlemen. An original Franklin stove is in the dining room fireplace.

24 - HOUR SERVICE
No Job Too Big or Too Small

Wedding Invitations — Announcements

Grant Printers

COMMERCIAL PRINTING

PHONE: 741 - 9028

170 MONMOUTH ST. RED BANK, N. J.

STAR CLEANERS
&
LAUNDERERS
INC.
SERVING MONMOUTH COUNTY
FOR OVER ONE QUARTER CENTURY



THE BEST COSTS NO MORE
NEVER A CHARGE FOR MINOR REPAIRS
• MYRTLE AVE. LONG BRANCH

SPECIALIZING IN HEIRLOOMING
OF WEDDING GOWNS

Dial **671-9000**

**WE SPECIALIZE
IN SERVICE**

FULL LINE OF BENJAMIN MOORE PAINTS
SHADES and DRAPERY HARDWARE
LAWN and GARDEN SUPPLIES

TONY'S

HARRIS HARDWARE

130 Main Street, Matawan

Phone: 566 - 1013

Regional High School Students Exhibit Art

A selection of paintings and ink drawings by Matawan High School students will be on display at the Matawan Office of the Central Jersey Bank and Trust Co., starting this month as part of the Bank's Tercentenary Exhibit.

The art students researched their pictures from old photographs of the town, collected by Mr. John Evans, social studies teacher at the school.

The following works will be shown:

First Library Building, 1910 - pencil by Casper Everhard.

Water Pumping Station on Church Street - pastel - by Peggy Harris.

Main Street Looking South at Business District, 1935 - pen and ink with pastel by Richard Haynes.

Matawan Creek at New Brunswick Ave. during Revolution - pastel - by Richard Haynes.

Burrowes House - pen and ink - by Ruth Kobus.

Lake Lefferts from Highway 34, 1932 water color - by Carolyn Manning.

Matawan Public School, 1895 - pencil by Roald Marley.

First Presbyterian Church, burned 1958 - pencil - by Karen Potosky.

Transportation Around 1900 - pen and ink - by Dominick Rizzo.

Cartan & Devlin Store - pen and ink by Ellen Schwartz.

Car Barns and Horse Drawn Trolley - pen and ink - by Susan Tanis.

Old Hand Brake Engine of Washington Fire Co. - pen and ink - by Myrna Wollenberg.

Also represented in the Exhibit will be valuable antique maps of the area, locally made pottery of the 19th Century, original copies of the Matawan Journal (1869), important documents and records and many other items of historical interest.

Mr. Charles W. Mandeville, manager, invites the public to attend the Exhibit at the Bank office, 168 - 70 Main Street Matawan. Bank hours are: Monday through Friday, from 9:00 a.m. to 2:30 p.m. and Friday evenings from 7:00 to 8:30 p.m.

FIRST AID SQUAD OPENS DRIVE

During the month of June, members of the Matawan Township First Aid and Rescue Squad will distribute coin cards for their annual fund drive. A fact sheet explaining the squad's function and details of the 1964 budget will accompany the cards.

The coin cards are collected personally by squad members during August. Over the past two years the population of the Township has doubled and the First Aid Squad has tried to keep pace by increasing its membership and equipment.

It is estimated that the 1964 budget will be \$24,000. The greatest portion of this bill will come from the annual fund drive.

STRATHMORE SUNDAY SOFTBALL LEAGUE STANDINGS

	W	L
ANGELS	4	0
CLOWNS	4	0
PIONEERS	3	1
ANCHOREMEN	3	1
POISON IVY	1	3
DUMPERS	1	3
OXEN	0	4
FOUR/FIFTHS	0	4

UNITED FUND STUDIED

The feasibility of a United Fund for the Strathmore area will be studied by a committee appointed by Herbert J. Parker, president, at the May meeting of the Civic Association.

Jonathan White was named temporary chairman of a study committee. Also appointed were David Sutliff, vice-president, and Gerard Fitzpatrick.

The new committee will study the possibility of consolidating the increasing number of fund drives of local activities into a single annual solicitation.

All residents interested in serving on this study committee should contact Mr. White or Mr. Sutliff.

Marc Woods Merger Study

A committee of the Marc Woods Residents Association has been named to investigate and study the question of Matawan Borough - Township merger.

President Thomas F. Ryan said the committee will make the final report expected next fall. The Strathmore Civic Association has completed a study and recommended that an official study be undertaken, jointly by the Borough Council and the Township Committee.

The Marc Woods Committee is expected to study the Strathmore report and discuss the issue with all borough groups.

Square Dance — June 27th

"A Hoedown Under The Stars" promises to be a highlight of the spring season according to plans released by the National Council of Jewish Women. The affair sponsored by its Matawan Branch will be on June 27th at The Oaks Patio on Route 35 in Middletown at 8:30 p.m. A barbiq with beer is part of the fun. Tickets are \$4.00 per person and more information can be had by calling Mrs. Peter Kolbrener at 566 - 8451.

Spring Dance Date

The Strathmore Civic Association Recreation Committee held a "Get — Acquainted Dance" on Saturday night, June 20th at "The Oaks" on Route 35 in Middletown.

The Dance started at 9 p.m. with Sal Fontana and his band entertaining. Prizes were awarded and a midnight snack served.

YMCA Starts Courses On "Learn to Swim"

The Red Bank Community YMCA has announced two "Learn to Swim" courses to start the 1964 outdoor summer swimming season. Beginning Saturday, June 6th and ending July 18th, two courses for non-swimmers and advanced beginners will be offered. Instruction will feature proper kicknig and arm movements, breathing, floating, basic water stunts, and many other beginning aquatic skills. YMCA certification at each basic level of achievement will be included in the course.

The courses will be held at the beautiful, crystal clear YMCA Camp Arrowhead pool located on Route 520, Marlboro, from 9:00 to 10:00 a.m. and from 10:00 to 11:00 a.m. The 9:00 to 10:00 a.m. course requires the parent to bring the child to Camp Arrowhead and will cost \$5.00 for YMCA members and \$8.00 for non-members. Transportation will be provided for the 10:00 to 11:00 a.m. course and will leave the Red Bank YMCA at 9:00 a.m. and return at 11:45 a.m. The cost of this program will be \$10.00 for YMCA members and \$13.00 for non-members.

The YMCA national aquatic testing program and progress rating system will be used throughout. Cards will be issued to each child denoting individual progress and highest skill level attained. Here is an excellent opportunity to have your child learn to swim the correct way — the "Y" way. Professional "Y" trained aquatic instructors will teach each course.

For further information or to obtain an enrollment form, contact Camp Arrowhead (phone 946 - 4598) or the Red Bank YMCA (phone 741 - 2504.) Enrollment is limited. Get your application in today.

Council of Jewish Women Hold First Installation

The Matawan Branch of the National Council of Jewish Women held its first installation dinner at "The Oaks" recently. Mrs. Robert Mutler, outgoing president of the Greater Red Bank Section, welcomed members and guests and said the formation of the new branch gave Red Bank the New Jersey Regional award for the greatest increase in membership.

Mrs. Arthur Stern, past president, of the Newark Section was installing officer and guest speaker.

Officers installed were:

Mrs. Albert Prelutsky, Chairman; Mrs. Benjamin Dissin and Mrs. Gary Leffer, Vice - Chairman; Mrs. Norman Brenner, Recording Secretary; Mrs. Sheldon Leffer, Financial Secretary; Mrs. Herbert Barrack, Treasurer; Mrs. Edmond Harris and Mrs. Ira Lichtenstein, Directors.

DISCOUNT BUILDING MATERIAL CENTER

Tel. PA 1-7300

ROUTE 9 — Just South Of The Sayre Woods Shopping Center

QUALITY AND SERVICE AT DISCOUNT PRICES

PATIOS

"FILON" NATIONALLY ADVERTISED
CORRUGATED OR FLAT
FIBERGLASS PANELS
from 25c sq. ft.

Many Colors and Weights —
Roofing - Fencing - Dividers, Etc.

"KAISER" - DIAMOND RIB or CORRUGATED
Aluminum Siding or Roofing

Plain or Colored
6' to 22' Long

REDWOOD LUMBER

CONST. HEART GRADE
In Stock: 1" - 1 1/4" - 2" Thickness
4x4 REDWOOD POSTS.

SCREEN WIRE

IN STOCK TO 48" WIDE
FULL ROLL - 100'

ALUMINUM 5 1/2c sq. ft.

FULL ROLL - 100'

FIBERGLASS 6c sq. ft.

INSECT PROOF

NEW! Screening NEW!

That Cools and Shades

(10 to 15 Degrees)

"SUN SCREEN" 19c
sq. ft.

GLASS SLIDING DOORS

ANODIZED - WITH KEY LOCKS AND SCREENS
GLAZED

	Crystal	1/4" Plate	Insulating Glass
5'x6' 8"	75.00	101.50	115.00
6'x6' 8"	80.00	112.50	121.50

Many Other Sizes Available

WATER REPELLANT - TERMITE CONTROL

Penta Wood Preservative

\$1.59 gal.

Redwood Stain with Penta

\$3.95 gal.

Decorative Paneling — More than 100 Full Size Samples on display — Many in stock. Constantly changing — always best values.

Many Specials

Inspect and Compare

Decorator Items — We Stock: Shutters, Shutterettes, Louvre Doors, Plygrille, Scallop and Decorative Moulding, Mosaic and Metal Tile, Etc., Etc., Etc. Come in and browse for ideas.

NEVER DONE IT BEFORE? Reluctant to try? Many building materials are now available in pre-cut and partially or fully pre-assembled units, making installation simple enough for the average home owner to accomplish. A partial listing of these items follows: Ready-hung doors (interior and exterior, wood and aluminum), Window Units, Bi-Passing and Bi-Folding Closet Doors, Stair-Paks (Pre-cut Stairs - also available assembled), etc.

WE STOCK a complete selection of all building materials from your footings to your roof. If we do not have it on hand, we will gladly order your special requirement.

DISCOUNT

BUILDING MATERIALS

CENTER

Open Daily & Saturday 8 A.M. to 7 P.M. — Fridays to 9 P.M.
TEL. PA 1-7300 ROUTE 9 - SOUTH OF SAYRE WOODS SHOPPING CENTER